



GLASSWASHER AX-40 230/50/1

Rack size 400x400mm and door clearance 300 mm



P/N 1303080



SALES DESCRIPTION

Sani-Control: guaranteed disinfection
Embedded bodywork and easy-grip door: hygienic and ergonomic
Exclusive Hydroblade™ washing arms: maximum effectiveness.
3-stage filtering system.
Double-walled body (partial).

Sani-Control guarantee

- ✓ GUARANTEED DISINFECTION in compliance with standard DIN 10534.
- ✓ THERMAL LOCK function: Ensures that rinsing will be carried out at the ideal temperature to disinfect the dishes.

New recessed bodywork

- ✓ Ergonomic design with rounded corners to prevent the accumulation of dirt and facilitate cleaning.
- ✓ Compact tank volume (50% water saving compared to the previous range).
- ✓ Embedded basket guides

Hydroblade™ washing arms

- ✓ Redesigned nozzles for greater washing performance.
- ✓ The “monoblock” design delivers durability and resistance to impacts.

- ✓ 30% savings in water consumption during rinsing compared to the previous range.

3-stage filter system: surface, tank and extraction

- ✓ Keeps the washing water in optimal conditions to maintain constant washing performance.
- ✓ The surface filters feature an “easy-on” design and can be quickly removed without having to disconnect the washing arms.

“Easy grip” door: new design with integrated door handle

- ✓ Designed to have no corners or areas that are difficult to access: prevents deposits of dirt and facilitates cleaning.
- ✓ Its ergonomic handle provides a perfect grip, even with wet hands.
- ✓ 30 cm load capacity: high versatility for washing a wide range of glasses and even medium-sized dishes.
- ✓ Double-walled door with safety microswitch and high quality seal.

Warewashing, made simple

- ✓ Active Xperience: simple and intuitive use
- ✓ Dedicated cycles: selection of the ideal washing programme using icons.
- ✓ Electronic control panel with IP65 humidity protection.

You will never WASH ALONE

- ✓ Tech-Services: our team of technicians will help you so that your machine is always ready for use.
- ✓ Design Services: tell us what your needs are and we will advise you.
- ✓ 60 years of experience and know-how at your disposal.

INCLUDES

- ✓ 1 glasses basket.
- ✓ 1 small basket for cutlery.
- ✓ 1 mixed basket (plates).

ACCESSORIES

- ☐ Manual water softeners
- ☐ Automatic water softeners
- ☐ 400X400 mm. baskets
- ☐ Inserts & supplements
- ☐ High Feet Kit
- ☐ Reverse Osmosis device OS-140P
- ☐ Dosing equipments
- ☐ Stand for 400x400 mm glasswashers
- ☐ Double rack kit for AX/UX-40



sammic | www.sammic.com
Food Service Equipment Manufacturer

Polígono Basarte, 1.
20720 Azkoitia, Spain

phone +34 943 15 72 36
sales@sammic.com



Project

Date

Item

Qty

Approved

WARE WASHING
COMMERCIAL GLASSWASHERS

product sheet
updated 23/09/2021



GLASSWASHER AX-40 230/50/1

Rack size 400x400mm and door clearance 300 mm



P/N 1303080

SPECIFICATIONS

Basket dimensions: 400 mm x 400 mm
Maximum glass height: 300 mm

Cycle duration: 90 / 120 / 180 "

Production baskets/hour: 40 / 30 / 20

Boiler capacity: 3.2 l

Wash tank capacity: 9 l

Water consumption/cycle: 2.2 l

Loading

✓ Pump: 250 W / 0.33 Hp

✓ Tank: 1200 W

✓ Boiler: 2500 W

✓ Total loading: 2750 W

Electrical supply: 230 V / 50 Hz / 1 ~ (12 A)

External dimensions (WxDxH)

✓ Width: 470 mm

✓ Depth: 537 mm

✓ Height: 710 mm

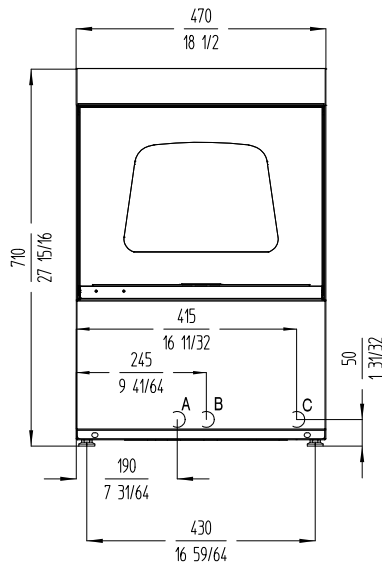
Net weight: 36.5 Kg

Noise level (1m.): <69 dB(A)

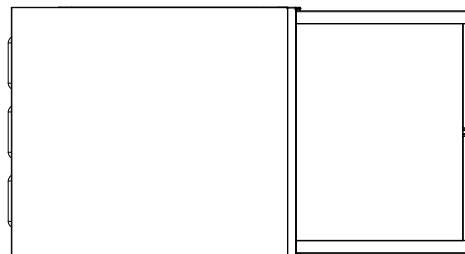
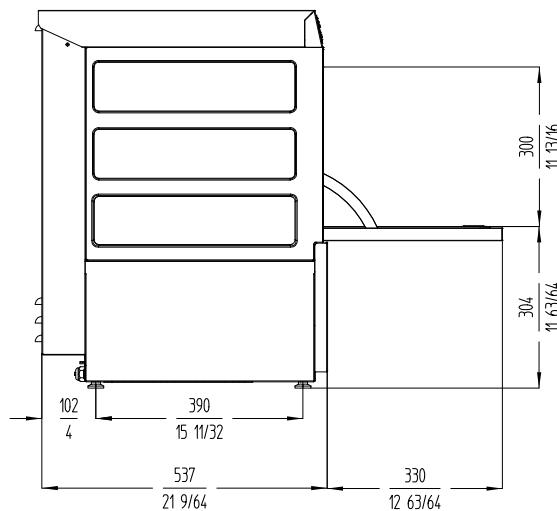
Crated dimensions

525 x 615 x 820 mm

Gross weight: 42.5 Kg.



A: Entrada de agua 3/4" GAS.
B: Tubo de desagüe Ø30 mm.
C: Cable conexión.



WARE WASHING
COMMERCIAL GLASSWASHERS

sammic | www.sammic.com
Food Service Equipment Manufacturer

Polígono Basarte, 1.
20720 Azkoitia, Spain

phone +34 943 15 72 36
sales@sammic.com



Project

Date

Item

Qty

Approved

product sheet
updated 23/09/2021