



UTENSIL WASHER LU-60 220/60/3

600 x 630 mm. basket



P/N 1300572



ACCESSORIES

- ☐ Stainless steel baskets
- ☐ Manual water softeners
- ☐ Automatic water softeners
- ☐ Dosing equipments
- ☐ Carrier for trays

SALES DESCRIPTION

Max. loading height: 650mm.

Ideal to wash big sized pots and wares.

- ✓ Powerful and high pressure: specially indicated for restaurants, ice-cream shops, pastries and butcheries.
- ✓ Constructed from stainless steel.
- ✓ Door divided in two parts, perfectly counterbalanced, easy to handle.
- ✓ Double skinned machines: silent working and reduced thermal dispersions.
- ✓ Wash tank without corners to avoid dirt accumulation in angles.
- ✓ Stamped wash dispersers in stainless steel tubes.
- ✓ Easy to remove wash- and rinse dispersers.
- ✓ Safety micro switch at the door and electronic safety device to guarantee washing temperature and time.
- ✓ Electronic control panel with LED showing wash and rinse temperature.

INCLUDES

- ✓ 1 stainless steel basket and insert for 4 trays.



sammic | www.sammic.com
Food Service Equipment Manufacturer

Polígono Basarte, 1.
20720 Azkoitia, Spain

phone +34 943 15 72 36
sales@sammic.com



Project

Date

Item

Qty

Approved

WARE WASHING
POT WASHERS

product sheet
updated 10/09/2021



UTENSIL WASHER LU-60 220/60/3

600 x 630 mm. basket



P/N 1300572

SPECIFICATIONS

Basket dimensions: 600 mm x 630 mm
Stainless steel basket : 1
Equipment: supplementary trays: 1
Maximum glass height: 650 mm
Cycles: 3
Cycle duration: 120 " / 240 " / 360 "
Production baskets/hour: 30 / 15 / 10
Pressure pump power: 470 W

Loading

- ✓ Pump: 3 Hp / 2200 W
- ✓ Tank: 6000 W
- ✓ Boiler: 9000 W
- ✓ Total loading: 11200 W

Electrical supply: 220 V / 60 Hz / 3 ~

Feed water temperature: 10 °C - 60 °C

Wash temperature: 40 °C - 70 °C

Rinse temperature: 70 °C - 95 °C

Wash tank capacity: 60 l

Boiler capacity: 12 l

Water consumption/cycle: 5 l

Drainage base maximum height: 185 mm

Drain diameter: 30 mm

External dimensions (WxDxH)

- ✓ Width: 742 mm
- ✓ Depth (closed): 852 mm
- ✓ Depth (open): 1232 mm
- ✓ Height (closed): 1840 mm
- ✓ Height (open): 2035 mm

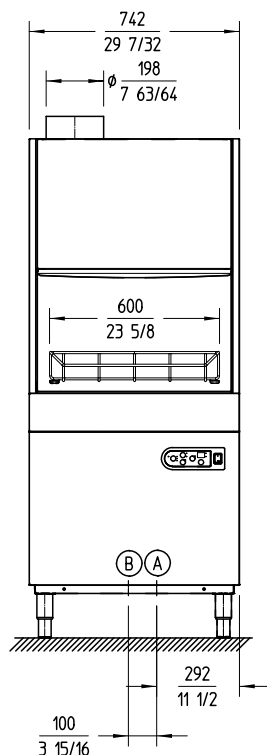
Net weight: 168 Kg

Noise level (1m.): 76 dB(A)

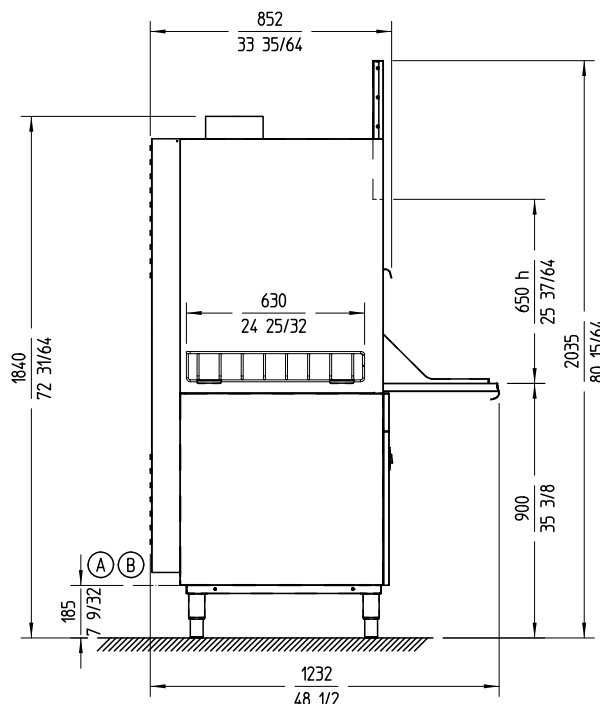
Crated dimensions

790 x 980 x 1950 mm

Gross weight: 177 Kg.



A- Entrada de agua 3/4" GAS
B- Tubo de desagüe Ø30 mm



WARE WASHING
POT WASHERS

sammic | www.sammic.com
Food Service Equipment Manufacturer

Polígono Basarte, 1.
20720 Azkoitia, Spain

phone +34 943 15 72 36
sales@sammic.com



Project

Date

Item

Qty

Approved

product sheet
updated 10/09/2021